

CRAWFORD

Lachlan façade



Cooper façade



Flinders façade



Barrington façade



Manning façade



Nepean façade

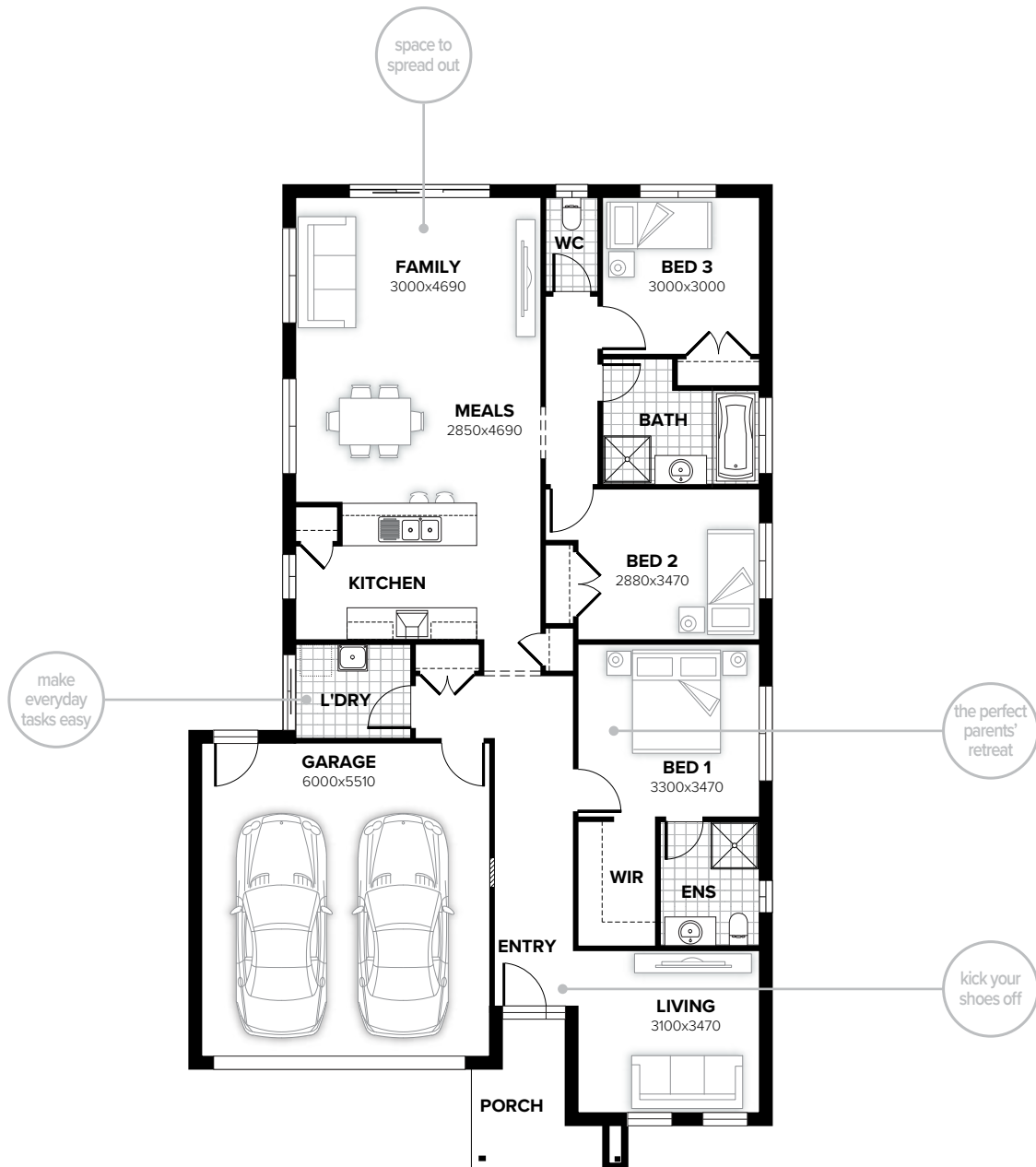


Bowman façade



CRAWFORD 178

3 2 0 2



FLOORPLAN OPTIONS

Want to put a personal touch on your home? Speak to your New Home Consultant about the exciting range of ready-to-go design options for this floorplan.

Popular design options include:

- Kitchen options
- Relocate living room
- Triple car garage option
- Alfresco option
- Storage and workshop options
- Modified porch to front

home width 11.15m
home length 18.83m

residence	136.37sqm	14.68sq
porch	5.61sqm	0.60sq
garage	36.48sqm	3.93sq
total	178.46sqm	19.21sq

Listed details based on Lachlan façade floorplan (illustrated)

Call 13 BURBANK Visit burbank.com.au

Burbank 
#noplacelikehome

*Copyright conditions. All photos and illustrations are representative only. Floor plans and specifications may be varied by Burbank without notice, the dimensions are diagrammatic only and a Building Contract with final drawings will display correct dimensions and detail. All designs are the property of Burbank and must not be used, reproduced, copied or varied, wholly or in part without written permission from an authorised Burbank representative. Copyright Burbank Australia (NSW) Pty Ltd. ABN 88 610 822 870. NSW BL 295627C. ACT BL 2016566.

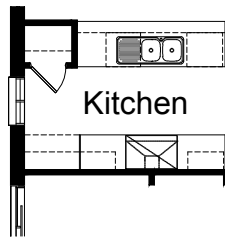
FLOORPLAN OPTIONS

CRAWFORD 178



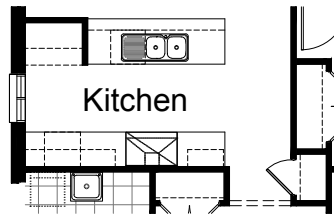
OPTION K1

Provide Kitchen upgrade with 3no. 800mm base cupboards, 1no. 900mm upright oven with 900mm canopy range hood above, 2no. 600mm overhead cupboards, 1no. laminated open shelf above refrigerator space, plaster lined Pantry with 1no. 620mm flush panel hinged door and 450mm shelves, 1no. 450mm drawers, 1no. laminated DW provision, 1no. laminated MW provision with pot drawer below and additional bench top and tiled splash back to suit.



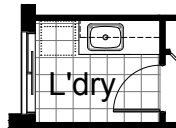
OPTION K2

Provide Kitchen upgrade by deleting Broom cupboard and relocating Pantry. Provide 2no. 800mm base cupboards, 1no. laminated MW provision with pot drawer below, 1no. 300mm base cupboard, 1no. 900mm upright cooker with 900mm canopy range hood above, 3no. 600mm overhead cupboards, 1no. 300mm laminated overhead open shelves, 1no. laminated open shelf above refrigerator space, 1no. 350mm base cupboard, 1no. laminated DW provision, 1no. 900mm base cupboard and 1no. 450mm drawers with additional bench top and tiled splash back to suit.



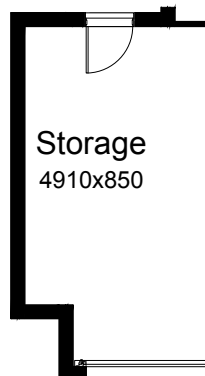
OPTION LD1

Provide Laundry upgrade with laminated insert trough, 1no. 900mm base cupboard, 1no. 450mm base cupboard, 1no. 900mm overhead cupboard, 1no. 450mm overhead cupboard and additional tiled splash back and bench top to suit.



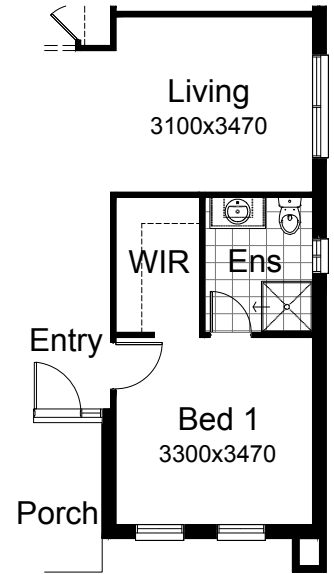
OPTION G1

Provide extension to Garage to create additional Storage area. Increases area by 4.58m². Increases width by 850mm.



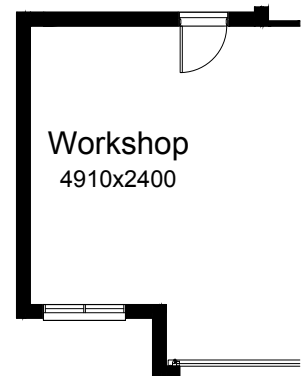
OPTION IP1

Relocate Living with Bed 1, Ensuite and WIR.



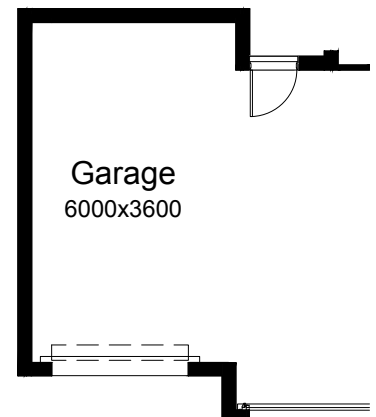
OPTION G2

Provide extension to Garage to create Workshop area including additional window to suit. Increases length by 2400mm. Increases area by 12.93m².



OPTION G3

Provide triple car Garage including additional roller door to front. Increases area by 23.69m². Increases width by 3600mm.



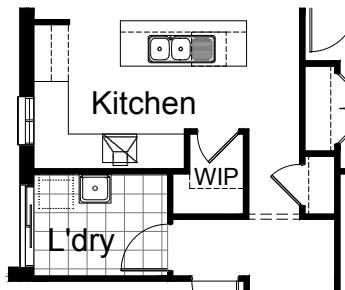
Call 13 BURBANK Visit burbank.com.au

Burbank 
#noplacelikehome

*Copyright conditions. All photos and illustrations are representative only. Floor plans and specifications may be varied by Burbank without notice, the dimensions are diagrammatic only and a Building Contract with final drawings will display correct dimensions and detail. All designs are the property of Burbank and must not be used, reproduced, copied or varied, wholly or in part without written permission from an authorised Burbank representative. Copyright Burbank Australia (NSW) Pty Ltd. ABN 88 610 822 870. NSW BL 295627C. ACT BL 2016566.

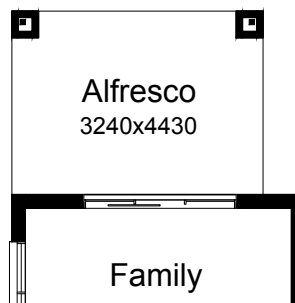
OPTION K3

Provide Kitchen and WIP Option by increasing Laundry width by 160mm, delete Linen cupboard, 2no. 520mm flush panel hinged doors and 3no. shelves, reduce L'dry passage by 200mm and provide site build plaster lined WIP with 3no. 300mm deep shelves, 3no. 450mm deep shelves and 1no. 720mm flush panel hinged door. Decrease Kitchen opening/Bulkhead width by 190mm to 900mm in lieu of standard 1090mm. Provide 2no. 400mm base cupboards, 2no. 800mm base cupboard, 1no. laminated DW provision, 1no. 300mm base cupboard, 1no. laminated open shelf above refrigerator space, 1no. 450mm drawers, 1no. 1050mm blind carcass with 1no. 600mm door, 1no. 600mm under bench oven with 1no. 600mm wide canopy range hood, 2no. 600mm overhead cupboard, 1no. 300mm overhead cupboard and 1no. 1200mm x 850mm aluminium sliding window with additional tiled splash back and bench top to suit. Convert Broom cupboard into Linen cupboard, increase width by 200mm in line with WIP wall, add 2no. shelves and provide 720mm hinged door i.l.o. 620mm door



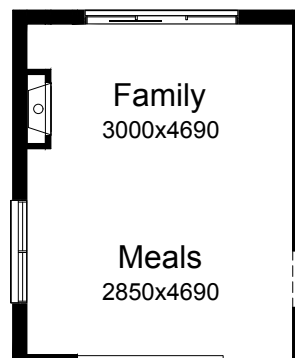
OPTION EP1

Provide Alfresco under dwelling roof line with structural concrete floor and 2no. brick piers to rear of Family. Increases area by 14.35m². Increases length by 3240mm



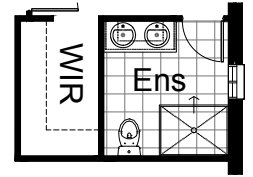
OPTION IP2

Provide Jetmaster SL-350 gas fireplace, 400mm off floor level in a 1400mm x 420mm boxed out plaster wall with a 4 sided black fascia to Family room side wall, delete 1no. 514mm x 1810mm aluminium sliding window to Family and relocate Meals window by 360mm to suit.



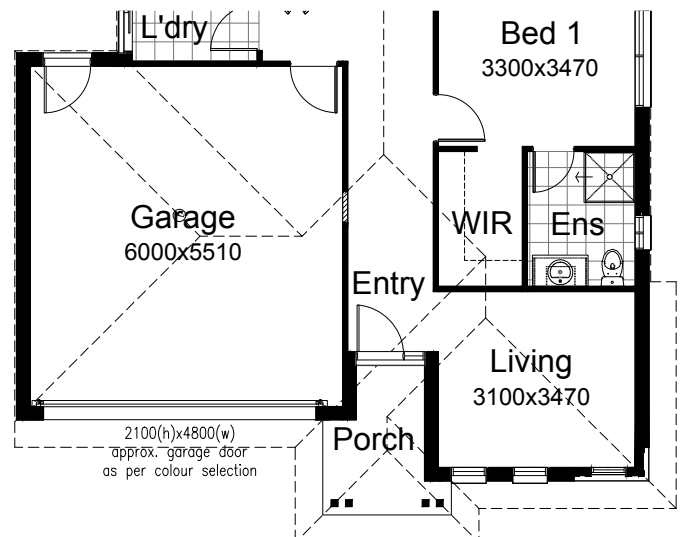
OPTION ENS1

Provide Ensuite Option with additional 1no. 1200mm x 900mm polymer shower base in lieu of standard, 1no. 1282mm wide vanity unit with 2no. basins in lieu of standard and increase Ensuite width by 300mm and decrease WIR width by 100mm and decrease Entry width by 200mm.



OPTION EP2

Provide Modified Porch to Barrington Facade by increasing Porch depth by 600mm and providing additional 2no. painted timber posts to suit. Note: Increases Porch area to 4.46m² in lieu of standard 3.10m².



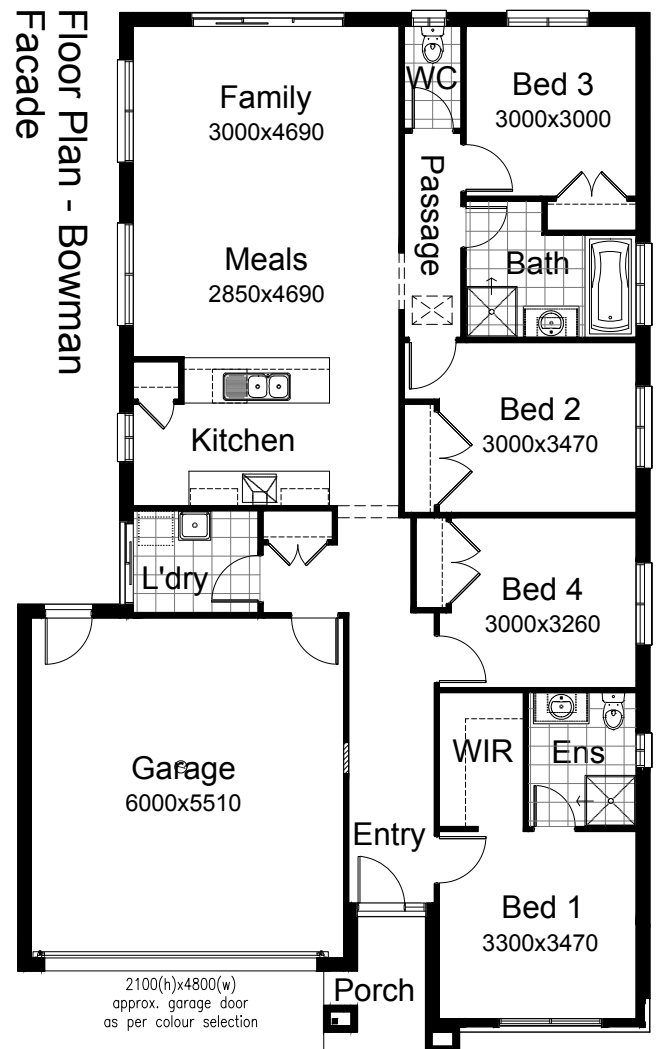
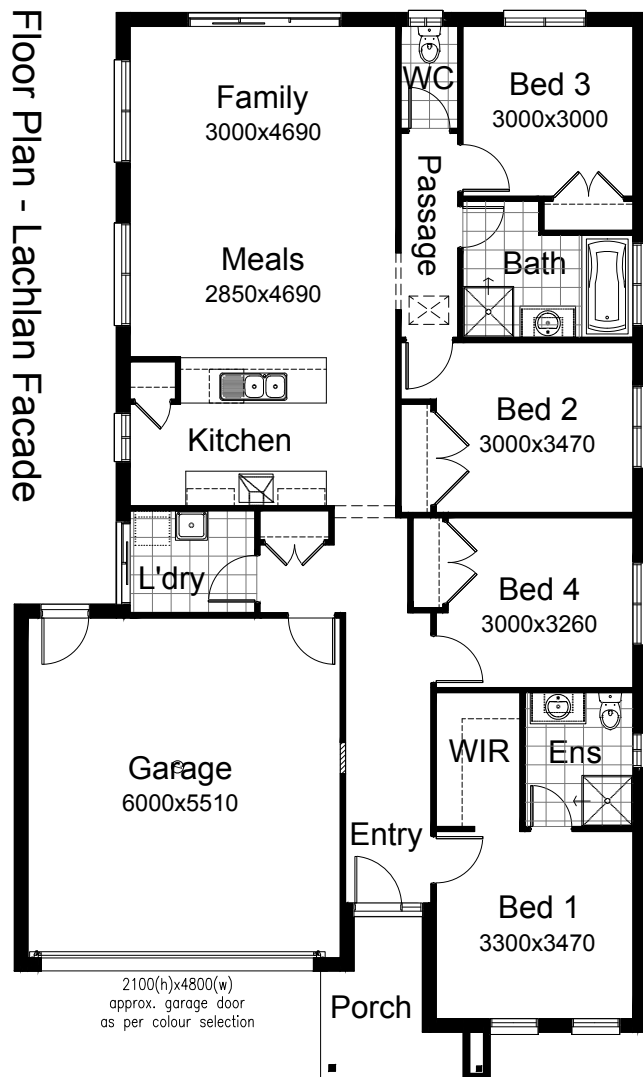
FLOORPLAN OPTIONS

CRAWFORD 178



OPTION IP3

Provide Bedroom 4 Option in lieu of Living room and relocate Bedroom 1 to suit. Decrease Ensuite length by 20mm, increase Bedroom 2 length by 120mm, increase Bedroom 2 robe width by 410mm and provide 2no. 820mm flush panel hinged doors in lieu of standard 2no. 620mm doors. Provide additional site built plaster lined robe with hanging rail and 2no. 720mm doors and 1no. 820mm flush panel hinged door to Bedroom 4 and delete 1no. 1800mm x 1810mm aluminium sliding window and provide 1no. 1200mm x 1450mm aluminium sliding window to Bedroom 4 to suit and increase bulkhead width to 210mm in lieu of 90mm.



Call 13 BURBANK Visit burbank.com.au

Burbank 
#noplacelikehome

*Copyright conditions. All photos and illustrations are representative only. Floor plans and specifications may be varied by Burbank without notice, the dimensions are diagrammatic only and a Building Contract with final drawings will display correct dimensions and detail. All designs are the property of Burbank and must not be used, reproduced, copied or varied, wholly or in part without written permission from an authorised Burbank representative. Copyright Burbank Australia (NSW) Pty Ltd. ABN 88 610 822 870. NSW BL 295627C. ACT BL 2016566.

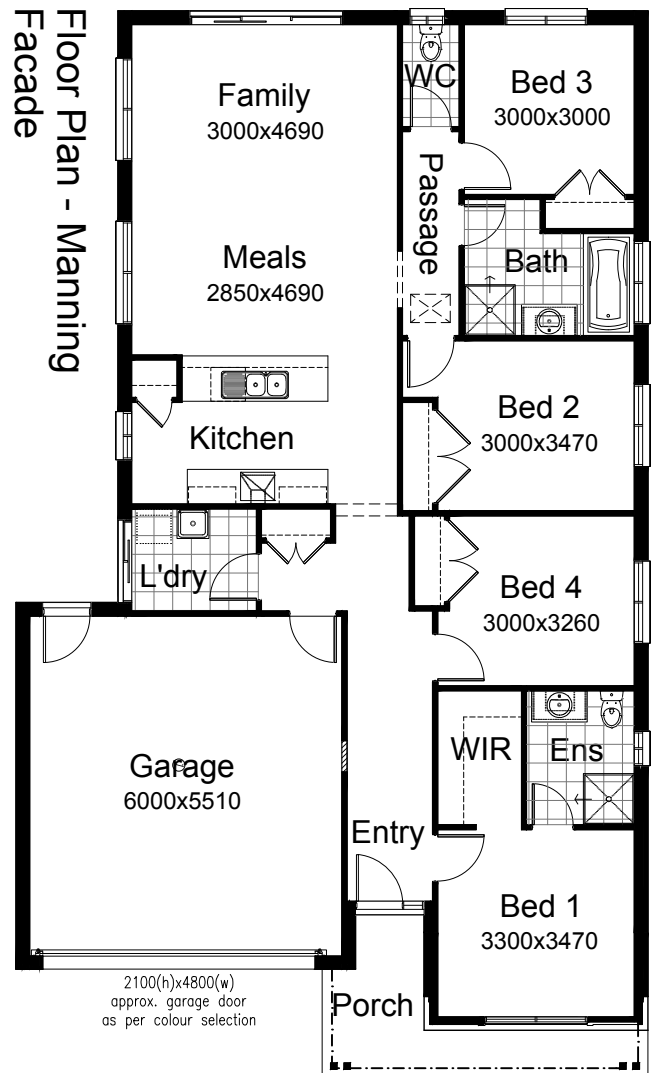
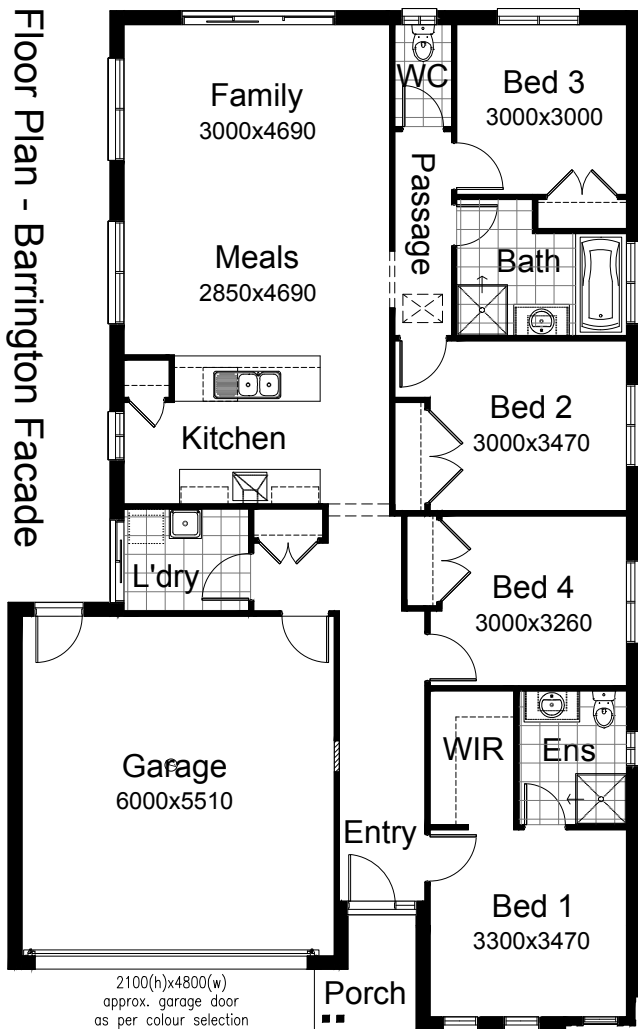
FLOORPLAN OPTIONS

CRAWFORD 178



OPTION IP3

Provide Bedroom 4 Option in lieu of Living room and relocate Bedroom 1 to suit. Decrease Ensuite length by 20mm, increase Bedroom 2 length by 120mm, increase Bedroom 2 robe width by 410mm and provide 2no. 820mm flush panel hinged doors in lieu of standard 2no. 620mm doors. Provide additional site built plaster lined robe with hanging rail and 2no. 720mm doors and 1no. 820mm flush panel hinged door to Bedroom 4 and delete 1no. 1800mm x 1810mm aluminium sliding window and provide 1no. 1200mm x 1450mm aluminium sliding window to Bedroom 4 to suit and increase bulkhead width to 210mm in lieu of 90mm.



Call 13 BURBANK Visit burbank.com.au

Burbank 
#noplacelikehome

*Copyright conditions. All photos and illustrations are representative only. Floor plans and specifications may be varied by Burbank without notice, the dimensions are diagrammatic only and a Building Contract with final drawings will display correct dimensions and detail. All designs are the property of Burbank and must not be used, reproduced, copied or varied, wholly or in part without written permission from an authorised Burbank representative. Copyright Burbank Australia (NSW) Pty Ltd. ABN 88 610 822 870. NSW BL 295627C. ACT BL 2016566.

FLOORPLAN OPTIONS

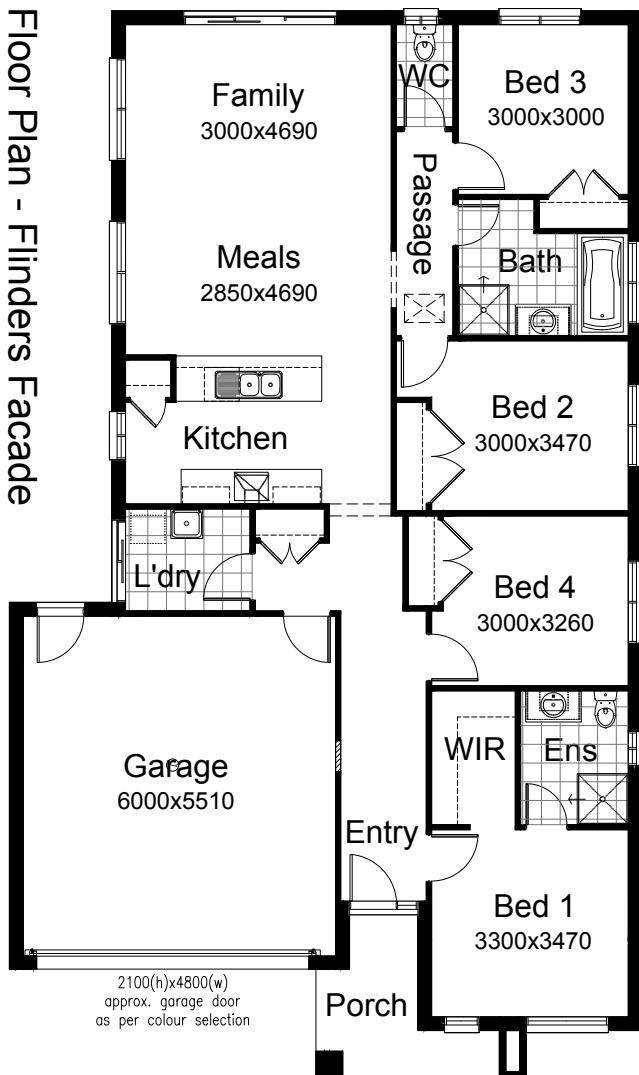
CRAWFORD 178



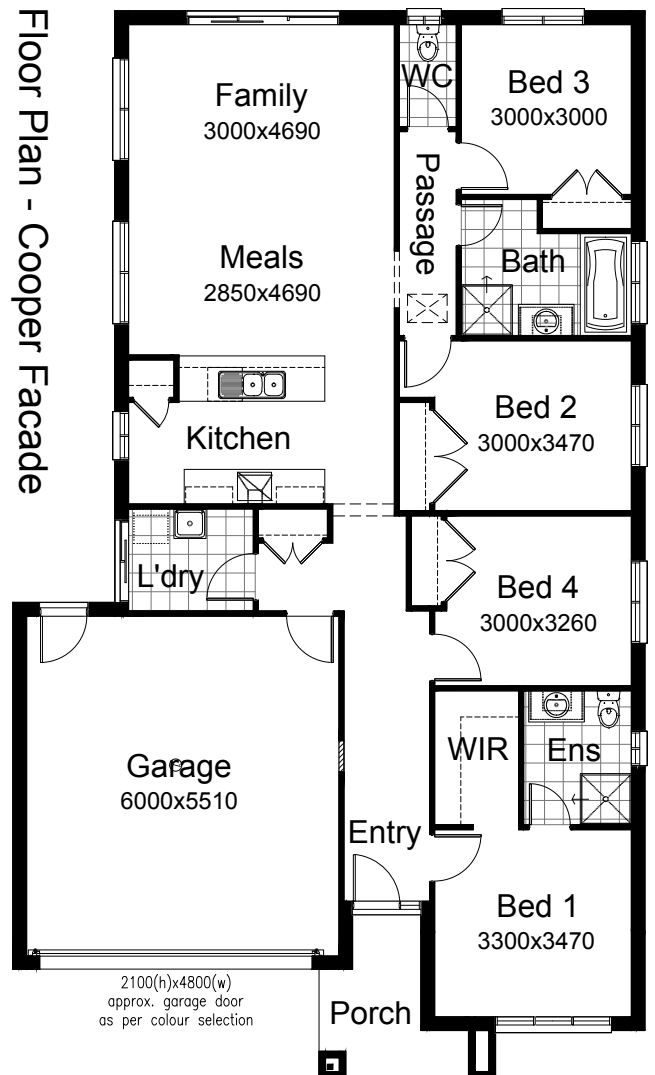
OPTION IP3

Provide Bedroom 4 Option in lieu of Living room and relocate Bedroom 1 to suit. Decrease Ensuite length by 20mm, increase Bedroom 2 length by 120mm, increase Bedroom 2 robe width by 410mm and provide 2no. 820mm flush panel hinged doors in lieu of standard 2no. 620mm doors. Provide additional site built plaster lined robe with hanging rail and 2no. 720mm doors and 1no. 820mm flush panel hinged door to Bedroom 4 and delete 1no. 1800mm x 1810mm aluminium sliding window and provide 1no. 1200mm x 1450mm aluminium sliding window to Bedroom 4 to suit and increase bulkhead width to 210mm in lieu of 90mm.

Floor Plan - Flinders Facade



Floor Plan - Cooper Facade



Call 13 BURBANK Visit burbank.com.au



*Copyright conditions. All photos and illustrations are representative only. Floor plans and specifications may be varied by Burbank without notice, the dimensions are diagrammatic only and a Building Contract with final drawings will display correct dimensions and detail. All designs are the property of Burbank and must not be used, reproduced, copied or varied, wholly or in part without written permission from an authorised Burbank representative. Copyright Burbank Australia (NSW) Pty Ltd. ABN 88 610 822 870. NSW BL 295627C. ACT BL 2016566.

OPTION IP3

Provide Bedroom 4 Option in lieu of Living room and relocate Bedroom 1 to suit. Decrease Ensuite length by 20mm, increase Bedroom 2 length by 120mm, increase Bedroom 2 robe width by 410mm and provide 2no. 820mm flush panel hinged doors in lieu of standard 2no. 620mm doors. Provide additional site built plaster lined robe with hanging rail and 2no. 720mm doors and 1no. 820mm flush panel hinged door to Bedroom 4 and delete 1no. 1800mm x 1810mm aluminium sliding window and provide 1no. 1200mm x 1450mm aluminium sliding window to Bedroom 4 to suit and increase bulkhead width to 210mm in lieu of 90mm.

